



Comic Relief

1

By 2015, Comic Relief had raised over £1 billion to improve the lives of some of those most in need. Write this figure in digits.

Comic Relief

2

Setting up a regular donation is a popular way to support Comic Relief. If a monthly donation of £20 were made for three years and this was increased by 20% per month for the next two years, how much would be raised in total over the five years?



Comic Relief

3



When David Walliams swam the 35km across the English Channel, it took him 10 hours 34 minutes. At what speed, in kilometres per hour (kph), did he swim?

Top Tip: convert 10 hours 34 minutes into hours first and round your answer to two decimal places.

Comic Relief



4

In 1993, 72% of people in the UK took part in Red Nose Day. How many of the total population of 57 650 000 people did **not** take part?

twinkl.com

Comic Relief

5

Comic Relief aims to support around $\frac{1}{2}$ of the world's children because they most need help. If 73% of the world's population are adults, what percentage of the world's population will receive this help?

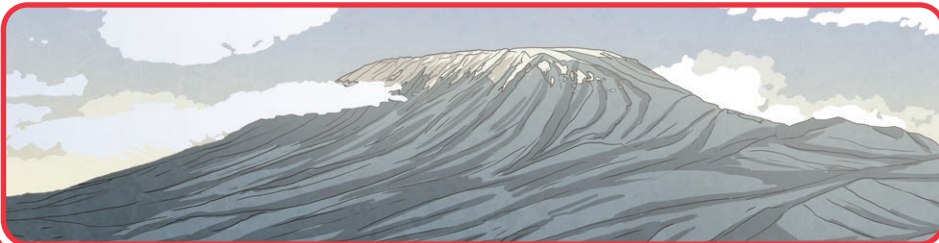


twinkl.com

Comic Relief

6

To raise money for Comic Relief, several celebrities have scaled Kilimanjaro, Africa's highest peak at 5895m. What would be the total distance up and down the mountain in km?

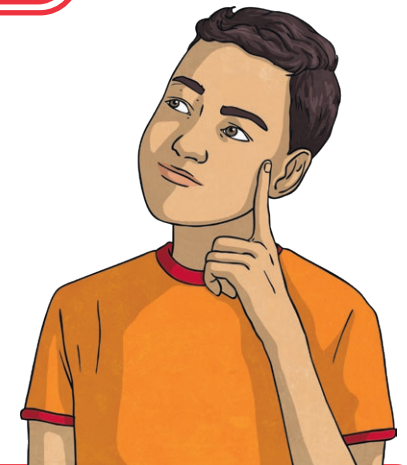


twinkl.com

Comic Relief

7

Eddie Izzard famously completed 43 marathons in 51 days to raise money for Comic Relief. What was the average distance in miles that she completed each day?



twinkl.com

Top Tip: a marathon covers 26.22 miles and round your answer to two decimal places.

Merchandise bought by the public is another way that Comic Relief raises money. Here is a price list for some of these items:

1 nose and 1 key ring = £4.50

2 noses and 2 small soft toys = £11.00

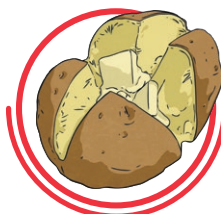
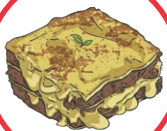
1 small soft toy and 2 noses = £7.00

- How much does each item cost?
- How much would you pay in total for 1 nose, 1 key ring and 1 soft toy?

Around $\frac{1}{5}$ of the world's population don't have adequate shelter, which Comic Relief are committed to changing. If this is around 1.56 billion people, calculate the world's population.



Donating £10 to Comic Relief can provide 40 meals for UK children and families most in need. How many meals could be funded with a donation of £357?



A cake sale is a popular way to raise money for Comic Relief. The following is the cost of ingredients to make 80 cakes:

flour: £0.84

sugar: £0.97

eggs: £1.85

butter: £3.26

At how much would you have to price each cake to make a profit of £50 to donate to Comic Relief? Round your answer to the nearest penny.